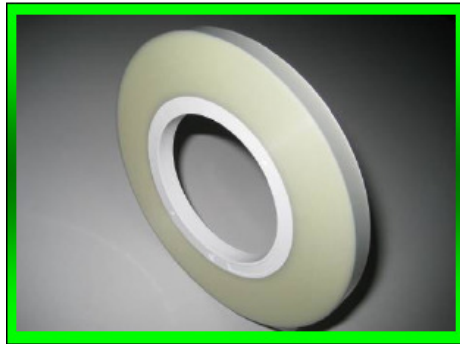


C-PAK TYPE CP43 COVER TAPE



Description :

C-PAK TYPE CP43 cover tape is a transparent polyester film with static dissipative properties on both sides and heat sealable over a wide range of temperatures, thus making it immensely suitable for carrier tapes made of polystyrene.

The adhesive system is specially developed for tight range in seal strength, as an addition to its stable seal strength.

Construction: Polyester film (PET) + Sealant Layer

GENERAL PROPERTIES (Preliminary data)

	<u>METHOD</u>	<u>VALUE</u>
Tensile Strength	JIS-K-7127	6.0 kg/ mm ²
Elongation	JIS-K-7127	120%
Luminous Transmittance	JIS-K-7105	90 %
Haze	JIS-K-7105	50 %
Surface Resistivity (Both sides S.R. measurement:	JIS-K-6911	≤ 10 ¹¹ Ohms/sq
Peel Strength Limit (<i>see recommended sealing parameters</i>)		20 to 80g
Base Material		POLYESTER
Dimensions:		
Width (mm)	5.3, 5.5, 9.2, 13.3, 21.0, 21.3, 25.5, 37.5, 49.5 (Other widths are available)	

Width Tolerance	For width	(5.3, 9.2, 13.3, 21.0, 21.3, 25.5, 37.5, 49.5)	± 0.1 mm
Thickness		0.055± 0.008	0.055mm
Length			300 m or 500 m

Standard Roll

It is wound on a 3” plastic core in all standard widths. Splice free rolls are available in 300M,500m lengths.

Color : Transparent Film * (Slight variations which do not affect product performance are normal)

Shelf Life

Shelf Life

Best if used within 12 months. Store at controlled room temperature environment, 25 ± 15°C and relative humidity of 40 - 70 %. Avoid excessive heat.

Recommended sealing temperature as follows (see Notes):

Number of sealing overlaps	Sealing Temperature °C
3x	150 to 180
4x	145 to 165
6x	140 to 160

Other Recommended Sealing Parameters (see Notes):

Sealing Shoe Width x length: 0.018” x 1.9” (0.457x 48mm)

Sealing time : 0.3 sec

Pressure: 30 psi

Sealing Mode: Reciprocating

Peel Test Speed during peeling: 300mm ± 10mm per minute

Angle of pull test: Between 165 to 180 degrees

Notes:

1. The recommended sealing parameters are based on embossed Cpak’s carrier tape material made of Polystyrene. The sealing parameters for other compatible carrier tape materials are available upon request.
2. Positioning the seal bead away from the slit edge of cover tape will keep adhesive from being forced out from the edge . Seal bead should remain away from the edge of tape to minimize potential breakage of the film. Use of a narrow seal width (0.015” – 0.020”) gives more control over the position in which the seal is placed relative to the carrier tape pocket, sprocket holes and slit edge of the cover tape.