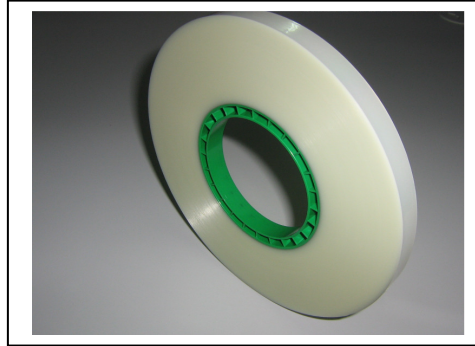


C-PAK TYPE CP44 COVER TAPE



Description :

C-PAK TYPE CP44 cover tape is a transparent polyester film with static dissipative properties on both sides and heat sealable over a wide range of temperatures, thus making it immensely suitable for carrier tapes made of polystyrene.

The adhesive system is specially developed for tight range in seal strength, as an addition to its stable seal strength.

Construction: Polyester film (PET) + Olefine layer + Sealant Layer

GENERAL PROPERTIES (Preliminary data)

	<u>METHOD</u>	<u>VALUE</u>
Tensile Strength	ASTM D-882	7.3 kg/ mm ²
Elongation	ASTM D-882	90 %
Luminous Transmittance	ASTM D-1003	>80 %
Haze	ASTM D-1003	<35%
Surface Resistivity (Both sides S.R. measurement:	ASTM D-257	$\leq 10^{11}$ Ohms/sq
Peel Strength Limit (<i>see recommended sealing parameters</i>)		20 to 80g

Base Material		POLYESTER	
Dimensions:			
Width (mm)		5.3, 5.5, 9.2, 13.1, 13.3, 21.0, 21.3, 25.5, 37.5, 49.5 (Other widths are available)	
Width Tolerance	For width	(5.3, 9.2, 13.3, 21.0, 21.3, 25.5, 37.5, 49.5)	± 0.1 mm
Thickness		0.060± 0.005	0.060mm
Length		300 m or 500 m	

Standard Roll

It is wound on a 3” plastic core in all standard widths. Splice free rolls are available in 300m, 500m lengths.

Color : Transparent Film * (Slight variations which do not affect product performance are normal)

Shelf Life

Shelf Life

Best if used within 24 months. Store at controlled room temperature environment, 25 ± 12°C and relative humidity of 40 - 60 %. Avoid excessive heat.

Recommended sealing temperature as follows (see Notes):

Number of sealing overlaps	Sealing Temperature °C
3x	165 to 200
4x	155 to 190
6x	150 to 185

Other Recommended Sealing Parameters (see Notes):

Sealing Shoe Width x length: 0.018” x 1.9” (0.457x 48mm)

Sealing time : 0.3 sec

Pressure: 30 psi

Sealing Mode: Reciprocating

Peel Test Speed during peeling: 300mm ± 10mm per minute

Angle of pull test: Between 165 to 180 degrees

Notes:

1. The recommended sealing parameters are based on embossed Cpak’s carrier tape material made of Polystyrene. The sealing parameters for other compatible carrier tape materials are available upon request.
2. Positioning the seal bead away from the slit edge of cover tape will keep adhesive from being forced

out from the edge. Seal bead should remain away from the edge of tape to minimize potential breakage of the film. Use of a narrow seal width (0.015" – 0.020") gives more control over the position in which the seal is placed relative to the carrier tape pocket, sprocket holes and slit edge of the cover tape.